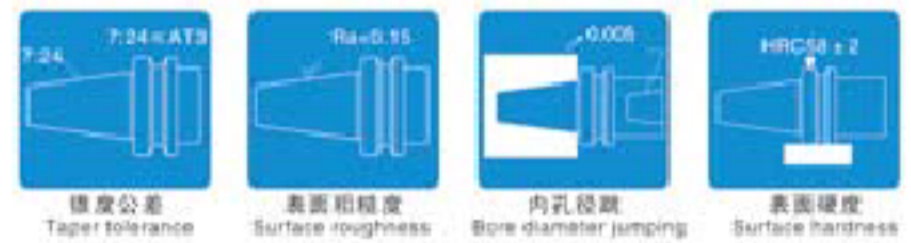
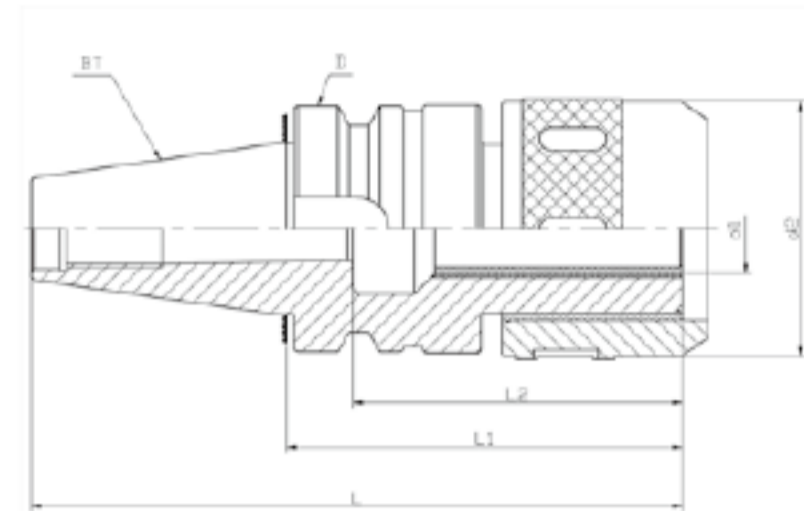


## C直柄筒夹系列 C STRAIGHT COLLET SERIES

### CD0702-01 BT/SK(DIN69871)/CAT 强力型立铣刀柄 BT/SK(DIN69871)/CAT NEEDLE ROLLER TYPE MILLING CHUCK

型号 Model No.	L	L1	L2	D	d1	d2
BT30-C20-75	123.4	75	70	46	20	55
BT30-C20-90	138.4	90			22	58
BT30-C22-90	138.4	90			25	
BT30-C25-80	128.4	80			32	68
BT30-C32-100	148.4	100	75	63	20	55
BT40-C20-90	155.4	90	70		22	58
BT40-C22-90	155.4	90			25	
BT40-C25-95	160.4	95	75		32	68
BT40-C25-130	195.4	130	75	100	32	68
BT40-C32-95	160.4	95				
BT40-C32-105	170.4	105				
BT40-C32-135	200.4	135				
BT50-C20-100	165.4	100	70	100	20	55
BT50-C20-105	170.4	105				
BT50-C20-115	180.4	115				
BT50-C20-150	215.4	150				
BT50-C25-95	196.8	95	75	100	25	58
BT50-C25-105	170.4	105				
BT50-C25-135	200.4	135				
BT50-C32-105	206.8	105				
BT50-C32-135	236.8	135	75	100	32	68
BT50-C32-165	266.8	165				
BT50-C32-200	265.4	100				
BT50-C32-250	315.4	100				
BT50-C32-300	365.4	100	90	100	42	84
BT50-C42-115	216.8	115				
BT50-C42-135	236.8	135				
BT50-C42-165	266.8	165				
SK30-C20-85	132.8	85	70	50	20	55
SK30-C20-100	147.8	100	75		32	68
SK30-C32-135	182.8	135	70		63.55	20
SK40-C20-85	153.4	85	70	32		68
SK40-C20-100	168.4	100		20		55
SK40-C20-135	203.4	135	75	97.5		32
SK40-C32-105	173.4	105	70		20	55
SK50-C20-105	206.75	105	75		32	68
SK50-C32-110	211.75	110	90	3.875	0.75	2.17
SK50-C32-135	236.75	135			1.25	2.87
CAT40-C3/4" -3.385"	5.23"	3.385"	2.56"	2.5"	0.75"	2.17"
CAT40-C3/4" -4.13"	6.82"	4.13"	2.76"		1.25"	2.87"
CAT40-C1-1/4" -4.53"	7.21"	3.35"	2.76"		0.75"	2.17"
CAT50-C3/4" -4.13"	8.13"	4.13"	2.56"	3.875"	0.75"	2.17"
CAT50-C1-1/4" -4.13"	8.13"	4.13"	2.76"		1.25"	2.87"



- ◎材质: 20CrMnTi/SCM415
  - ◎硬度: 56-60HRC, 渗碳深度 > 0.8mm
  - ◎锥柄公差等级: ≤AT3
  - ◎刀柄柄体做-196℃超长深冷处理及热时效处理。
  - ◎预设动平衡G6.3-8000rpm, 精密动平衡G6.3-12000rpm
  - ◎刀柄内孔分割了六槽以防止刀具转动, 增大夹持力
  - ◎采用特殊材料制做滚珠轴承保持架, 延长了使用寿命, 增强了夹紧力
  - ◎具有夹持力大, 定心精度高, 特别用于强力切削
- ◎Material: 20CrMnTi/SCM415
  - ◎Hardness: 56-60HRC, Carbon depth > 0.8mm
  - ◎Tolerance class: ≤AT3
  - ◎Default standard balancing G6.3-8000rpm, precision dynamic balancing G6.3-12000rpm
  - ◎Inner hole of the shank divide into 6 troughs to prevent the insert remove, increase the grasp force
  - ◎Ball bearing cage is made of special material, improve the endurance, enhance the grasp force
  - ◎Grasp force strong, centering accuracy high, suit to heavy cutting



### 精度检测 Inspection of accuracy

d	L	锥柄形式(BT/SK/CAT)	工作长度L	径向跳动 run out	动平衡等级(G6.3) Balance	
20	60	30/40/50	≤165	≤10 μ	8000rpm	12000rpm
22	70					
25	70					
32	80					
42	100	50		≤20 μ		

如需AD+B型订购时需注明, 例如: BT40 (AD+B) -C32-90  
Note: If need AD+B type, please specify For example BT40 (AD+B) -C32-90

