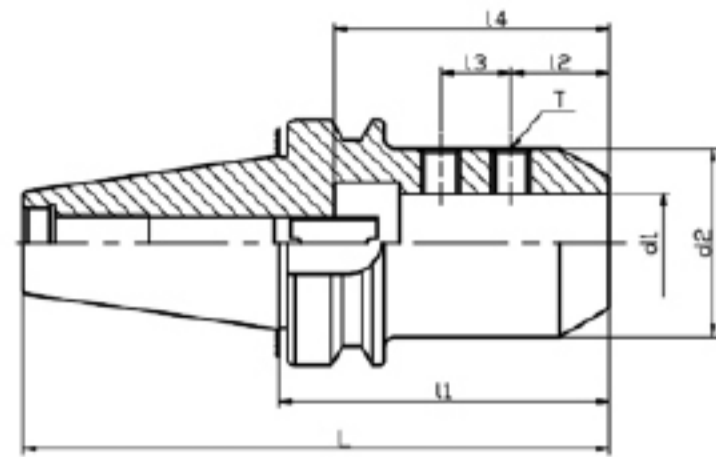


CD1101-04 BT/SLN(DIN1835-B) 侧固式立铣刀柄 SIDE LOCK END MILL HOLDER



●可精做动平衡 Precision dynamic balancing  
G6.3 12000rpm/18000rpm



锥度公差  
Taper tolerance



表面粗糙度  
Surface roughness



内孔径跳  
Bore diameter jumping



表面硬度  
Surface hardness

型号 Model No. d1-l1	d1	L	l2	l3	l4	d2	T	KGS
BT30-SLN6-60	6	108.4	18	-	40	25	M6X1.0P	0.55
BT30-SLN8-60	8	108.4	18	-	40	28	M8X1.25P	0.60
BT30-SLN10-60	10	108.4	20	-	44	35	M10X1.5P	0.70
BT30-SLN12-60	12	108.4	22.5	-	49	42	M12X1.75P	0.75
BT30-SLN16-75	16	123.4	24	-	52	48	M14X2.0P	1.05
BT30-SLN20-75	20	123.4	25	-	54	52	M16X2.0P	1.10
BT30-SLN25-90	25	138.4	24	25	59	65	M18X2.0P	1.70
BT40-SLN6-50	6	115.4	18	-	40	25	M6X1.0P	1.10
BT40-SLN6-150	6	215.4	18	-	40	25	M6X1.0P	1.32
BT40-SLN8-50	8	115.4	18	-	40	28	M8X1.25P	1.10
BT40-SLN8-150	8	215.4	18	-	40	28	M8X1.25P	1.30
BT40-SLN10-63	10	128.4	20	-	44	35	M10X1.5P	1.25
BT40-SLN10-150	10	215.4	20	-	44	35	M10X1.5P	1.40
BT40-SLN12-63	12	128.4	22.5	-	49	42	M12X1.75P	1.30
BT40-SLN12-150	12	215.4	22.5	-	49	42	M12X1.75P	1.53
BT40-SLN16-63	16	128.4	24	-	52	48	M14X2.0P	1.40
BT40-SLN16-150	16	215.4	24	-	52	48	M14X2.0P	1.60
BT40-SLN18-63	18	128.4	24	-	54	50	M14X2.0P	1.65
BT40-SLN20-63	20	128.4	25	-	54	52	M16X2.0P	1.40
BT40-SLN25-100	25	165.4	24	25	59	65	M18X2.0P	2.50
BT40-SLN32-100	32	165.4	24	28	63	72	M20X2.0P	2.75
BT50-SLN6-63	6	164.8	18	-	40	25	M6X1.0P	3.80
BT50-SLN8-63	8	164.8	18	-	40	28	M8X1.25P	3.80
BT50-SLN10-63	10	164.8	20	-	44	35	M10X1.5P	3.00
BT50-SLN12-80	12	181.8	22.5	-	49	42	M12X1.75P	4.00
BT50-SLN16-80	16	181.8	24	-	52	48	M14X2.0P	4.40
BT50-SLN20-80	20	181.8	25	-	54	52	M16X2.0P	4.40
BT50-SLN25-100	25	201.8	24	25	59	65	M18X2.0P	5.10
BT50-SLN32-105	32	206.8	24	28	63	72	M20X2.0P	5.20
BT50-SLN40-115	40	216.8	30	32	73	90	M20X2.0P	6.60
BT50-SLN42-120	42	221.8	30	32	73	90	M20X2.0P	6.70
BT50-SLN40-120	40	221.8	30	32	73	90	M20X2.0P	5.75
BT50-SLN50-120	50	221.8	35	35	78	100	M24X2.0P	5.80
BT50-SLN63-120	63	221.8	40	40	80	125	M24X2.0P	6.00