

数控刀柄系列 CNC TOOL SYSTEMS

CD1103-02 BT/FMB平面铣刀柄 BT/FMB FACE MILL ARBORS(TYPE B)



Fig1

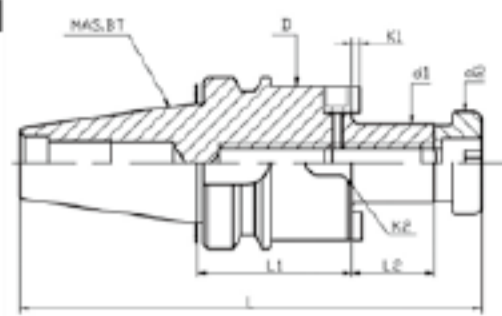
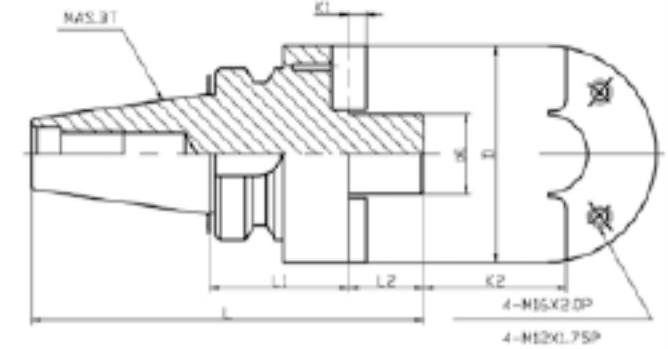


Fig2



精做动平衡 Precision dynamic balancing
G6.3 12000rpm



锥度公差
Taper tolerance



表面粗糙度
Surface roughness



外圆径跳
outer circle diameter jump



表面硬度
Surface hardness

FMB为公制规格(Metric)

型号 Model No.	Fig.	L	L1	L2	D	d1h7	d2	K1	K2	KGS
BT30-FMB22-45		111.4	45	18	50	22	26	4.8	10	0.85
BT30-FMB22-60		126.4	60	18	50	22	26	4.8	10	1.25
BT30-FMB27-45		113.4	45	20	60	27	31.5	5.8	12	1.2
BT30-FMB27-60		128.4	60	20	60	27	31.5	5.8	12	1.35
BT30-FMB32-45		115.4	45	22	78	32	41	6.8	14	1.35
BT40-FMB22-45		128.4	45	18	48	22	26	4.8	10	1.45
BT40-FMB22-60		143.4	60	18	48	22	26	4.8	10	1.7
BT40-FMB22-100		183.4	100	18	48	22	26	4.8	10	2.2
BT40-FMB22-150		223.4	150	18	48	22	26	4.8	10	3.1
BT40-FMB22-200		283.4	200	18	48	22	26	4.8	10	3.1
BT40-FMB27-45		130.4	45	20	60	27	31.5	5.8	12	1.6
BT40-FMB27-60		145.4	60	20	60	27	31.5	5.8	12	2
BT40-FMB27-90		175.4	90	20	60	27	31.5	5.8	12	2.3
BT40-FMB27-105		190.4	105	20	60	27	31.5	5.8	12	2.5
BT40-FMB32-45		132.4	45	22	78	32	41	6.8	14	1.72
BT40-FMB32-60		147.4	60	22	78	32	41	6.8	14	2.1
BT40-FMB40-60		150.4	60	25	80	40	48	8.3	16	2.8
BT50-FMB22-45		164.8	45	18	48	22	26	4.8	10	4.5
BT50-FMB22-90		209.8	90	18	48	22	26	4.8	10	5.1
BT50-FMB22-150		269.8	150	18	48	22	26	4.8	10	6.8
BT50-FMB22-200		319.8	200	18	48	22	26	4.8	10	7
BT50-FMB22-250		369.8	250	18	48	22	26	4.8	10	8
BT50-FMB22-300		419.8	300	18	60	22	26	4.8	10	10.5
BT50-FMB22-350		469.8	350	18	60	22	26	4.8	10	10.5
BT50-FMB22-400		519.8	400	18	60	22	26	4.8	10	4.6
BT50-FMB27-50		171.8	50	20	60	27	31.5	5.8	12	4.6
BT50-FMB27-90		211.8	90	20	60	27	31.5	5.8	12	5.4
BT50-FMB27-150		271.8	150	20	60	27	31.5	5.8	12	7.5
BT50-FMB27-200		321.8	200	20	60	27	31.5	5.8	12	9.5
BT50-FMB27-250		371.8	250	20	60	27	31.5	5.8	12	11
BT50-FMB32-50		173.8	50	22	78	32	41	6.8	14	5.7
BT50-FMB32-90		213.8	90	22	78	32	41	6.8	14	5.8
BT50-FMB40-50		176.8	50	25	89	40	48	8.3	16	5.2
BT50-FMB40-90		216.8	90	25	89	40	48	8.3	16	6
BT50-FMB40-105		231.8	105	25	98	40	48	8.3	16	7.2
BT50-FMB40F-75		202.8	75	26	110	40	-	8.3	16	6
BT50-FMB60-75		201.8	75	25	140	60	-	12.5	25.4	8.5