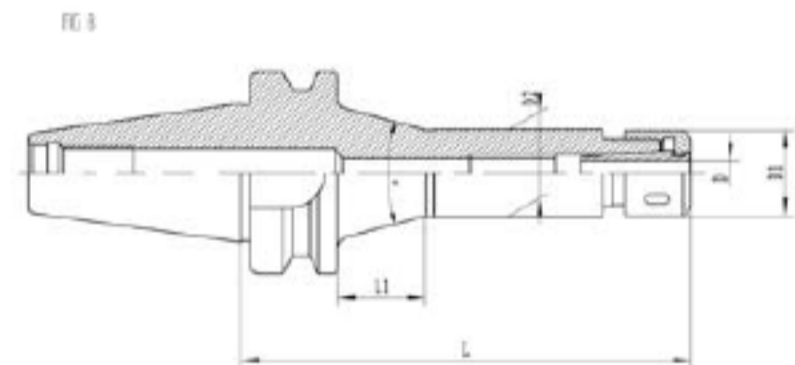
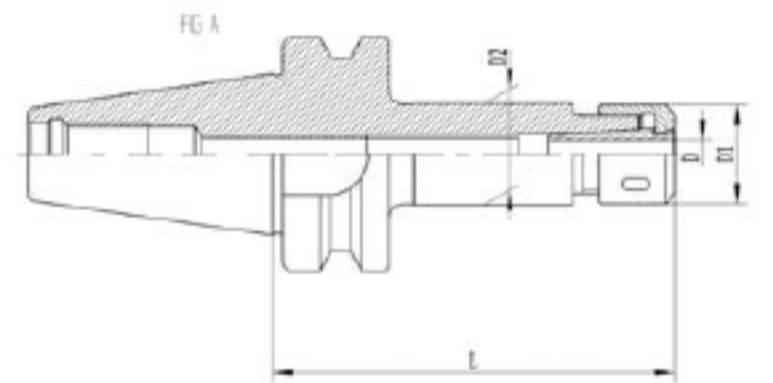


CSK高速筒夹系列 CSK HIGH SPEED COLLET SERIES

CD0205-04 BT-CSK高转速精密筒夹刀柄 BT-CSK HIGH SPEED COLLET CHUCK

型号 Model No.	D	L	L1	D1	α	COLLET	FIG	KGS
BT30-CSK6-60	2-6	60	-	19.5	-	CSK6	A	0.7
BT30-CSK6-90		90	-		-		A	0.7
BT30-CSK6-120		120	20		30°		B	0.8
BT30-CSK10-45	1-10	45	-	27.5	-	CSK10	A	0.8
BT30-CSK10-60		60	-		-		A	0.9
BT30-CSK10-75		75	-		-		A	1.0
BT30-CSK10-90		90	-		-		A	1.0
BT30-CSK10-120		120	-	-	-	A	1.1	
BT30-CSK13-60	3-13	60	-	37	-	CSK13	A	1.1
BT30-CSK16-60	2-16	60	-	40	-	CSK16	A	1.1
BT30-CSK16-75		75	-		-		A	1.2
BT30-CSK16-90		90	-		-		A	1.2
BT30-CSK16-120		120	-		-		A	1.3
BT30-CSK20-60	4-20	60	-	48	-	CSK20	A	0.7
BT30-CSK20-75		75	-		-		A	0.9
BT30-CSK20-90		90	-		-		A	1.2
BT30-CSK25-90	6-25	90	-	55	-	CSK25	A	1.5
BT40-CSK6-60	2-6	60	-	19.5	-	CSK6	A	1.0
BT40-CSK6-90		90	-		-		A	1.1
BT40-CSK6-120		120	30		30°		B	1.4
BT40-CSK6-150		150	30		30°		B	1.5
BT40-CSK10-60	1-10	60	-	27.5	-	CSK10	A	1.1
BT40-CSK10-75		75	-		-		A	1.2
BT40-CSK10-90		90	-		-		A	1.2
BT40-CSK10-120		120	30		30°		B	1.4
BT40-CSK10-150		150	30		30°		B	1.6
BT40-CSK10-180		180	30	30°	B	1.6		
BT30-CSK13-90	3-13	90	-	37	-	CSK13	A	1.3
BT30-CSK13-120		120	-		-		A	1.5
BT40-CSK13-60		60	-		-		A	1.3
BT40-CSK13-90		90	-	-	-	A	1.5	
BT40-CSK16-60	2-16	60	-	40	-	CSK16	A	1.3
BT40-CSK16-75		75	-		-		A	1.4
BT40-CSK16-90		90	-		-		A	1.5
BT40-CSK16-120		120	-		-		A	1.7
BT40-CSK16-150		150	-		-		A	1.9
BT40-CSK16-180		180	-	-	-	A	2.0	
BT40-CSK20-60	4-20	60	-	48	-	CSK20	A	1.3
BT40-CSK20-75		75	-		-		A	1.4
BT40-CSK20-90		90	-		-		A	1.6
BT40-CSK20-120		120	-		-		A	2.0
BT40-CSK25-75	6-25	75	-	55	-	CSK25	A	1.7
BT40-CSK25-90		90	-		-		A	1.8
BT40-CSK25-120		120	-		-		A	2.0
BT50-CSK6-105	2-6	105	-	19.5	-	CSK6	A	3.8
BT50-CSK6-135		135	30		30°		B	3.9
BT50-CSK6-165		165	30		30°		B	4.0
BT50-CSK6-200		200	30		30°		B	4.2
BT50-CSK10-105	1-10	105	-	27.5	-	CSK10	A	4.2
BT50-CSK10-135		135	-		-		A	4.4
BT50-CSK10-165		165	30		30°		B	4.6
BT50-CSK10-200		200	30		30°		B	4.8
BT50-CSK10-225		225	30		30°		B	5.0
BT50-CSK16-105	2-16	105	-	40	-	CSK16	A	4.7
BT50-CSK16-135		135	-		-		A	4.9
BT50-CSK16-165		165	30		30°		B	5.1
BT50-CSK16-200		200	30		30°		B	5.5
BT50-CSK20-105	4-20	105	-	48	-	CSK20	A	4.3
BT50-CSK20-135		135	-		-		A	4.6
BT50-CSK20-165		165	-		-		A	5.0
BT50-CSK20-200		200	-		-		A	5.4
BT50-CSK25-105	6-25	105	-	55	-	CSK25	A	5.2
BT50-CSK25-135		135	-		-		A	5.4
BT50-CSK25-165		165	-		-		A	5.6
BT50-CSK25-225		225	-		-		A	6.0



锥度公差
Taper tolerance



表面粗糙度
Surface roughness



内孔台阶
Bore diameter jumping



表面硬度
Surface hardness

- 锥度精度: $\leq AT3$
- 基本材质: 20CrMnTi/SCM415
- 硬度: 56-60HRC
- 渗碳深度: $>0.8\text{mm}$
- 刀柄精做动平衡G2.5 20000rpm

- Precision taper: $\leq AT3$
- Material: 20CrMnTi/SCM415
- Hardness: 56-60HRC
- Carbon Depth: $>0.8\text{mm}$
- Shank dynamic balance standard: G2.5 20000rpm